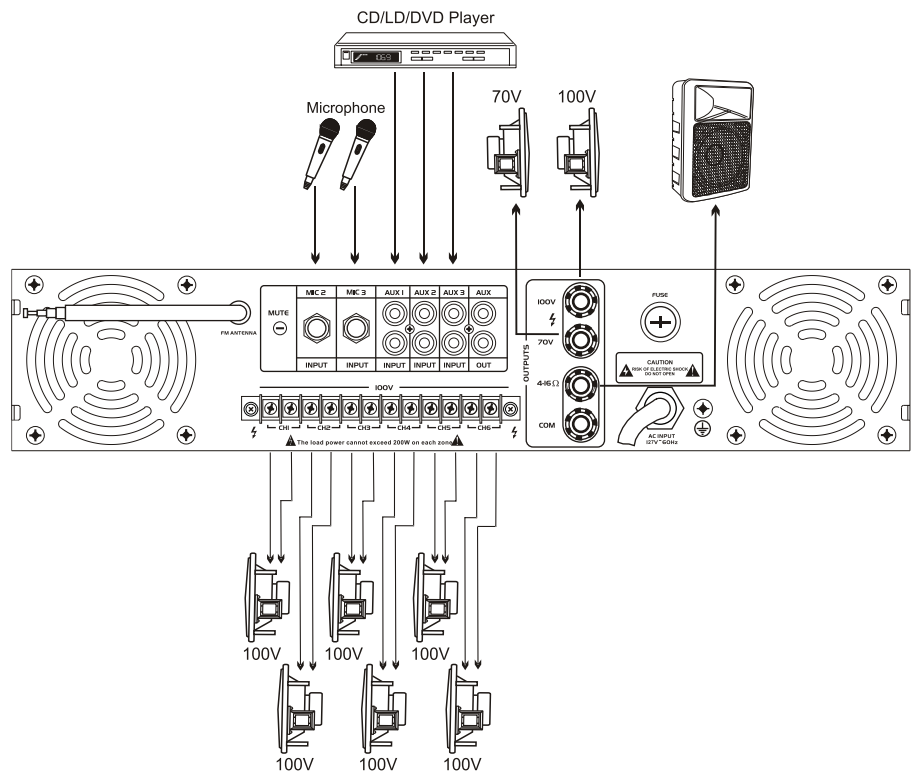


Parameters

Output power	1000W RMS
Output type	70 V, 100 V or 4-16Ω
Mic input	5 mV, 600 Ohms
Line input	300 mV, 10 kOhms
Frequency range	80 Hz - 16 kHz
Distortion	0.5%(1kHz)
S/N ratio	Mic: 75dB, Line: 85dB

Connecters



Please use the original packaging if the device is to be transported. Never remove the serial barcode from the device as this would make the guarantee void. Please consider that unauthorized modifications on the speaker-system are forbidden due to safety reasons! If this device will be operated in any way different to the one described in this manual, the product may suffer damages and the guarantee becomes void. Furthermore, any other operation may lead to dangers like short-circuit, burns, electric shock, hearing loss etc.

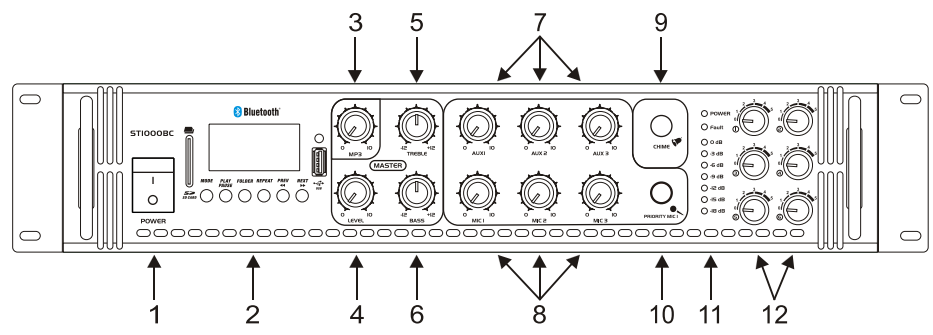
Notes

- a. Please read the entire attached documents carefully before using the device, and keep them for your reference.
- b. The power supply must match the demand of the device with reliable ground wire.
- c. All covering signal should be complied with the demand of the device.
- d. Make sure to shut off the device before connecting.
- e. The device should be equipped far away high temperature, moisture and powerful electromagnetic field.
- f. Please don't use organic cleaner but dry soft cloth to clear the device.

Features

- 3 Mic and 3 Aux inputs, 1 Aux output
- 70V, 100V PA-outputs, 4-16 ohm output
- Mic1 input on the front panel is priority
- Mp3 player with bluetooth and FM radio
- Treble and bass controls, master volume control
- 7-band level indication and fault indication
- Protection-circuits: turn on delay, over current, over heating, short circuit,
- 6 zone outputs with separate volume controls

Front Panel Description



1. Power Switch

To turn on or turn off the PA-amplifier.

2. Mp3 Player With Bluetooth And FM Radio

(1) The SD card connector.

(2) **MODE**: Push this key and release, change playing mode to USB/SD/Bluetooth/FM. Push it with 1 second, turn on/off the player.

(3) **PLAY/PAUSE**: In USB/SD/Bluetooth mode, push this key and release to play/pause state. In FM radio mode, press it with 1 second, automatic searching FM station.

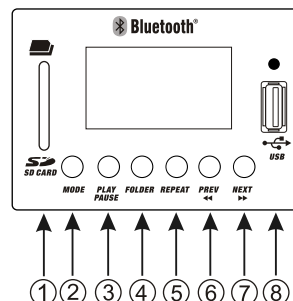
(4) **FOLDER**: Push this key and release, enter the folder menu. Then push the “PREV” or “NEXT” key to select a song, and push the “PLAY/PAUSE” key to play it.

(5) **REPEAT**: Push this key and release to change cycle mode: Folder/One/Random/All.

(6) **PREV/◀**: Push this key and release, play the previous song. In USB or SD playing mode, push it and hold, enter the fast rewind state. In Bluetooth or FM playing mode, push it and hold, decrease playing volume.

(7) **NEXT/▶**: Push this key and release, play the next song. In USB/SD playing mode, push it and hold, enter the fast forward state. In Bluetooth or FM playing mode, push it and hold, increase playing volume.

(8) The U-disk connector.



3. Mp3 Control

A rotated knobs to adjust the level of the Mp3 input signal.

4. Master Level Control

A rotated knob to adjusts the level of the master output.

5. Treble Control

A rotated knob to increase or lower the high frequency of the input signal.

6. Bass Control

A rotated knob to increase or lower the low frequency of the input signal.

7. Aux 1-3 Control

3 rotated knobs to adjust the level of the 3 AUX input signals.

The level of player or voice recorder are to be controlled by the knob of AUX1.

8. Mic 1-3 Control

3 rotated knob to adjust the level of the 3 MIC input signals.

9. Chime-button

Push it to send a chime sound. Chime button with priority-function, auto mute other signal.

10. Mic1 Socket

To connect a microphone with jack-plug. MIC 1 with priority-function, auto mute other signal.

11. Power LED, Fault LED And Signal Level Meter

The power LED indicates the amplifier is turning on.

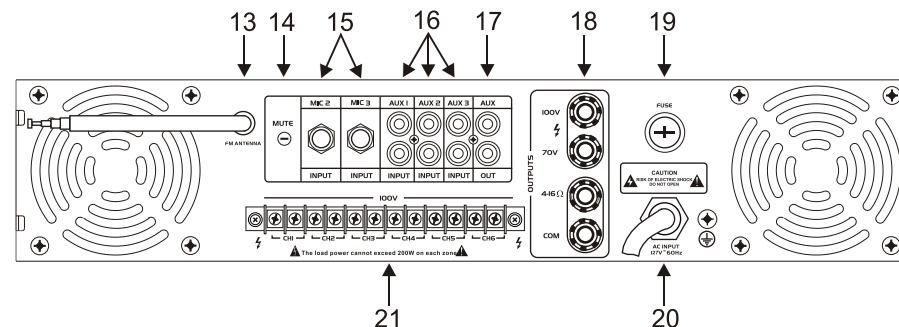
The fault led indicates short-circuit, over current or over heating.

The signal level meter shows the master channel signal level.

12. Zone Knobs

6 rotatable band switches, to adjust 6 zones volume in 5 steps.

Rear Panel Description



13. FM Antenna

An antenna for receiving FM radio station.

14. Mute-control

For signal attenuation between 0 and -30 dB of mute-control.

15. Mic 2 And Mic3 Inputs

Connect your microphones with 6.35mm jack-plug here.

16. Aux 1, Aux2, Aux3 Inputs

Connect your line-level sources here.

17. Aux Output

Output sockets for connecting further mixing amplifiers.

18. PA Output And 4-16ohm Binding Posts

The 100V and 70V binding posts for connecting your PA-speakers.

The 4-16ohm binding post for connecting your passive speaker-system.

19. Fuse Holder

Only replace the fuse when the device is disconnected from mains. Only use fuses of the same rating and power.

20. Power Cord

The power cord is connected to a electrical outlet for supply AC power to the amplifier. The amplifier can be supplied with the voltage AC127V.

21. Zone Output

6 zone outputs(100V) with screw terminal connectors.